



**ANNUAL DZONGKHAG STATISTICS  
2010**



**Dzongkhag Administration  
TRASHIYANGTSE**

© 2010

National Statistics Bureau

All rights reserved

Published by

National Statistics Bureau

Contact

National Statistics Bureau

PO Box No. 338

Telephone: +975-2-322753/333296

Fax: +975-2-323069

Website: [www.nsb.gov.bt](http://www.nsb.gov.bt)

Statistical Unit

Trashiyangtse Dzongkhag

Telephone: +975:04:781142 PABX:+975:04:781109

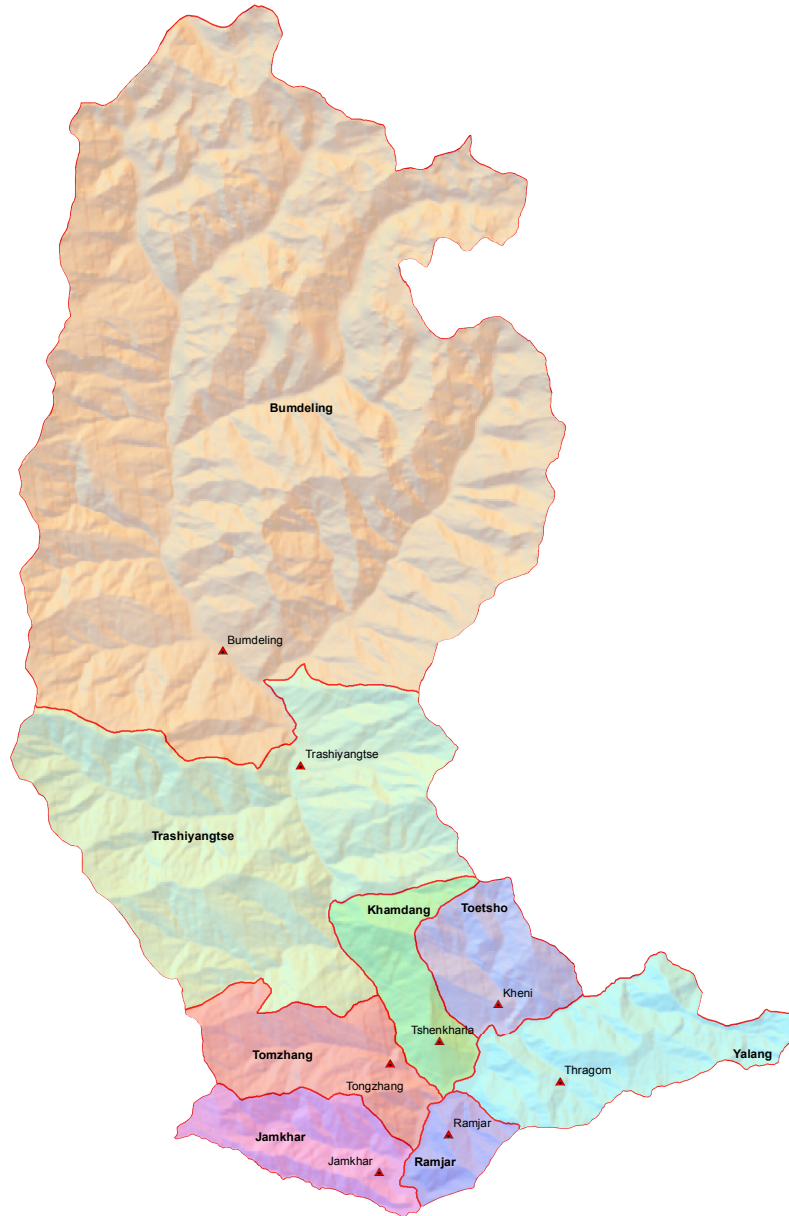
Fax: +975:04:781135

Email: [stshering@nsb.gov.bt](mailto:stshering@nsb.gov.bt)

First Issue

Catalogue No. 104

# TASHI YANGTSE DZONGKHAG



**GEWOG CENTRE**

**Scale :1:190,000**

## Table of Contents

|  |     |
|--|-----|
| Preface.....   | i   |
| Background.....  | ii  |
| Abbreviations.....   | iii |
| Table 1.1: General Information.....  | 1   |
| Table 1.2: Local Governance.....   | 2   |
| Table 2.1: Population by Age and Sex.....                                      | 3-4 |
| Table 3.1: Number of Schools, Institutions, Teachers and Students.....         | 5   |
| Table 3.1(Contd.): Number of Schools, Institutions, Teachers and Students..... | 6-7 |
| Table 3.2: School Enrolment by Grade and Sex.....                              | 8-9 |
| Table 3.3: Students by Age-Group, Sex and By Level.....                        | 10  |
| Table 3.3 (Contd.): Students by Age-Group, Sex and By Level.....               | 11  |
| Table 3.4: Number of Sanitation & Water Facilities in Schools.....             | 11  |
| Table 4.1: Type of Health Infrastructure, Facilities & Personnel.....          | 12  |
| Table 4.2: Top Ten Morbidity.....  | 13  |
| Table 5.1: Number of Industrial Establishment & Transport.....                 | 14  |
| Table 6.1: Renewable Natural Resources.....                                    | 15  |
| Table 6.2: Agricultural Production.....  | 16  |
| Table 6.2 (Contd.): Agricultural Production.....                               | 17  |
| Table 6.2 (Contd.): Agricultural Production.....                               | 18  |
| Table 6.3: Livestock Population.....   | 19  |
| Table 6.4: Livestock Products.....   | 20  |
| Table 6.5: Forestry Products.....  | 20  |
| Table 7.1: Infrastructure.....   | 21  |
| Table 8.1: Telecommunication.....  | 21  |
| Table 9.1: Environment.....  | 22  |
| Table 10.1: Dzongkhag 9th & 10th Five Year Plan Outlays.....                   | 23  |
| Table 10.2: Dzongkhag 9th & 10th Five Year Plan Expenditure.....               | 23  |
| Table 10.3: Gewog 9th & 10th Five Year Plan Outlays.....                       | 24  |
| Table 10.4: Gewog 9th & 10th Five Year Plan Expenditure.....                   | 24  |
| Table 11.1: Gross and Net Enrolment Rate by Level.....                         | 25  |
| Table 11.2 Literacy Rate by Sex.....   | 25  |
| Table 11.3: Distance to the Nearest School.....                                | 25  |
| Table 12.1: Health Coverage .....  | 26  |
| Table 12.2: Distance to Health Centers, Water Sources and Sanitation.....      | 26  |
| Table 13.1: Distance to Nearest Market by Households.....                      | 27  |
| Table 13.2: Percentage of Households Access to Credit Facilities.....          | 27  |
| Table 14.1: Employment by Industries, Age-Group and Sex.....                   | 28  |
| Table 15.1: Renewable Natural Resources.....                                   | 29  |
| Table 16.1: Walking Distance to Nearest Road by Households.....                | 30  |

|  |       |
|--|-------|
| Table 17.1: Number of Households Having Telecommunication.....             | 30    |
| Table 18.1: Number of Cultural Infrastructure and Religious Personnel..... | 31-32 |
| Table 19.1: Forest Coverage & Fuel Usage in Percent.....                   | 32    |
| Table 20.1: Poverty, Dependency Ratio and Housing Condition.....           | 33    |

## Preface

The Annual Dzongkhag Statistics of Trashiyangtse is the first in the series of publications. It attempts to provide comprehensive statistics of Trashiyangtse Dzongkhag and will be published annually.

The report contains statistics on demographic and socio-economic, environment, culture, local governance and infrastructures of the Dzongkhag. The statistical data for this publication are collected and compiled from various sectors and through primary sources.

We hope that this report will serve as a source of information and guiding tool for micro-level planning and decision-making in the Dzongkhag. Statistics office, Trashiyangtse would like to thank and acknowledge the support and cooperation of all sector heads concerned for providing timely information for this report. Without their support, this publication would not have been possible. Through this initiative, we also hope that the maintenance of sectoral information and updation in the Dzongkhag will become more systematic and efficient henceforth.

Since this report is the first publication and with information source being from numerous sectors, we expect there may be certain deficiencies in terms of coverage and updation. However, there will be continuous efforts made to improve its coverage and quality in our future publications. Your comments and suggestions in this regard will be highly appreciated.

National Statistics Bureau  
Thimphu

## Background

Trashiyangtse Dzongkhag was created in year 1992, coinciding with the beginning of the Seventh Five Year Plan from Trashigang Dzongkhag. It has a total area of 1437.8 Sq. Km with elevation ranging from about 500 to 5400 meters above the mean sea level. The Dzongkhag is bordered by Trashigang and Mongar Dzongkhag in the south, Lhuntshe Dzongkhag in the west, the Indian state of Arunachal Pradesh in the east, and the Tibet (China) in North.

Administratively the Dzongkhag is divided into eight Gewogs Viz; Jamkhar, Tongzhang, Yangtse, Bumdeling, Khamdang, Teotsho, Yalang and Ramjar. The Dzongkhag has projected population of 19,314 in 2009.

Agriculture and livestock farming is the main source of livelihood for majority of population. Rice, maize, millet, buckwheat and wheat are the major cereal crops grown. While orange, potatoes and chilly are the main cash crops of the Dzongkhag.

Trashiyangtse is known for the production of traditional handicraft like wooden bowl (*“Dapa”*) and Daphne paper (*“Desho”*). Trashiyangtse is endowed with Cordyceps (*Chinese Caterpillar*) at the pastoral areas which fetches very high price through export.

Trashiyangtse is also known for its rich biological diversity with Bumdeling Wildlife Sanctuary being well known as winter habitat and roosting place of Black-Necked Crane, a highly endangered species of bird in the world. There are possibilities of discovering very rare species of flora and fauna in the conservation area of Bumdeling Wildlife Sanctuary. A series of flash floods had damaged the paddy fields of Bumdeling which is used as the winter feeding ground.

The Dzongkhag has 1 Higher Secondary School, 1 Middle Secondary School, 4 Lower Secondary Schools, 22 Community Primary Schools, 1 Hospital, 7 Basic Health Units, 8 Renewable Natural Resources Extension Centers, 1 Institute for Zorig Chusum and 46 Km black-topped Dzongkhag road. Over 70 percent of the households have access to piped and safe drinking water supply. About 65 percent of the rural households are connected with electricity.

It has scared monument like Chorten Kora in Yangtse, which was built by Lam Ngawang loday of Rigsum Goenpa to subdue the local Demons and Gomphu kora. Yangtse Dzong accommodates Dzongkhag staff and Drangthrim office while the old Dzong accommodates Dratshang.

## Abbreviations

|               |   |                |  |
|---------------|---|----------------|--|
| <b>%:</b>     | Percent   | <b>LFS:</b>    | Labor Force Survey                         |
| <b>&lt; :</b> | Less than   | <b>LSS:</b>    | Lower Secondary School                     |
| <b>&gt; :</b> | Greater than  | <b>Max:</b>    | Maximum                                    |
| <b>AIDS:</b>  | Acquired Immune Deficiency Syndrome                             | <b>Min:</b>    | Minimum                                    |
| <b>Avg:</b>   | Average   | <b>MSS:</b>    | Middle Secondary School                    |
| <b>BHU:</b>   | Basic Health Unit   | <b>n.a:</b>    | Not Available                              |
| <b>BLSS:</b>  | Bhutan Living Standard Survey                                   | <b>N.A:</b>    | Not Applicable                             |
| <b>Cft:</b>   | Cubic Feet  | <b>NFE:</b>    | Non Formal Education                       |
| <b>CPS:</b>   | Community Primary school  | <b>Nu:</b>     | Ngultrum                                   |
| <b>DPTH:</b>  | Diphtheria Parthuisis Tetanus Hepatitis B                       | <b>ORC:</b>    | Outreach Clinic                            |
| <b>DYT:</b>   | Dzongkhag Yargye Tsogdue  | <b>PAR:</b>    | Poverty Analysis Report                    |
| <b>FYP:</b>   | Five Year Plan  | <b>PHCB:</b>   | Population and Housing<br>Census of Bhutan |
| <b>GDP:</b>   | Gross Domestic Product  | <b>PP:</b>     | Pre Primary                                |
| <b>GIS:</b>   | (Infrastructure mapping): Geographical<br>Infrastructure System | <b>PS:</b>     | Primary School                             |
| <b>Gm:</b>    | Gram  | <b>Pvt:</b>    | Private                                    |
| <b>GYT:</b>   | Gewog Yargye Tshogchung   | <b>Qty:</b>    | Quantity                                   |
| <b>HIV:</b>   | Human Immune Virus  | <b>Sq. Km:</b> | Square Kilometer                           |
| <b>Hr:</b>    | Hour  | <b>SYB:</b>    | Statistical Yearbook                       |
| <b>HSS:</b>   | Higher Secondary School   | <b>TV:</b>     | Television                                 |
| <b>Inst:</b>  | Institute   |                |  |
| <b>Kg:</b>    | Kilogram  |                |  |



National Statistics Bureau  
ROYAL GOVERNMENT OF BHUTAN  
P.O. Box No. 338 Thimphu  
Telephone No: +975-2-322753/333296/325402  
Fax: +975-2-323069

[www.nsb.gov.bt](http://www.nsb.gov.bt)

ISBN-978-99936-28-08-8

TABLE 1.1: GENERAL INFORMATION, TRASHIYANGTSE, 2005 TO 2010

| Details                                 | 2005   | 2006   | 2007   | 2008   | 2009   | 2010   |
|---|--------|--------|--------|--------|--------|--------|
| Dzongkhag area (Sq. Km)                 | 1437.8 | 1437.8 | 1437.8 | 1437.8 | 1437.8 | 1437.8 |
| Population (Number)                     | 17740  | 18048  | 18361  | 18676  | 18994  | 19314  |
| Population density (Persons per Sq. Km) | 12     | 12     | 12     | 12     | 13     | 13     |
| Population sex ratio                    | 100    | 99     | 99     | 98     | 98     | 98     |
| Administration (Number)                 |        |        |        |        |        |        |
| Drungkhags                              | 0      | 0      | 0      | 0      | 0      | 0      |
| Gewogs                                  | 8      | 8      | 8      | 8      | 8      | 8      |
| Chiwogs                                 | 76     | 76     | 76     | 76     | 76     | 76     |
| Villages                                | 117    | 117    | 117    | 117    | 117    | 117    |
| Households                              | 3764   | 3490   | 3490   | 3490   | 3490   | 3490   |
| Towns                                   | 1      | 1      | 1      | 1      | 1      | 1      |

Note: Total Population for the year 2006 onwards are based on the projected population.

Source: Gewog Administration, Trashiyangtse Dzongkhag and PHCB 2005

TABLE 1.2: LOCAL GOVERNANCE, TRASHIYANGTSE, 2007 TO 2009

| Details                              | 2007 | 2008  | 2009  |
|--------------------------------------|------|-------|-------|
| Local governance (Number)            |      |       |       |
| Total Gewog Tshogpas                 | 64   | 64    | 64    |
| Male                                 | 64   | 55    | 54    |
| Female                               | 0    | 9     | 10    |
| Total Mangmis                        | 8    | 8     | 8     |
| Male                                 | 8    | 8     | 8     |
| Female                               | 0    | 0     | 0     |
| Total Chupons                        | 136  | 136   | 136   |
| Male                                 | 136  | 136   | 130   |
| Female                               | 6    | 6     | 6     |
| DYT members                          | 154  | 152   | 152   |
| Male                                 | 154  | 151   | 151   |
| Female                               | 0    | 1     | 1     |
| GYT members                          | 17   | 17    | 17    |
| Male                                 | 17   | 17    | 17    |
| Female                               | 0    | 0     | 0     |
| Polling stations                     | 0    | 37    | 37    |
| Eligible voters (18 years and above) | 0    | 13749 | 13749 |
| Male                                 | 0    | 6582  | 6582  |
| Female                               | 0    | 7167  | 7167  |
| Parliamentarians                     | 0    | 3     | 3     |
| Male                                 | 0    | 3     | 3     |
| Female                               | 0    | 0     | 0     |
| Total Dzongkhag Adm. Staff           | 138  | 136   | 139   |
| Male                                 | 131  | 126   | 129   |
| Female                               | 7    | 10    | 10    |
| Police stations                      | 1    | 1     | 1     |

Source: Gewog Administration & Election Office, Trashiyangtse Dzongkhag

TABLE 2.1: POPULATION BY AGE AND SEX, TRASHIYANGTSE,  
2005 TO 2010

| Age-group by sex | 2005  | 2006  | 2007  | 2008  | 2009  | 2010  |
|------------------|-------|-------|-------|-------|-------|-------|
| Total            | 17740 | 18049 | 18360 | 18673 | 18994 | 19314 |
| 0-4              | 1939  | 1913  | 2036  | 2159  | 2280  | 2399  |
| 5-9              | 2201  | 1880  | 1833  | 1794  | 1762  | 1736  |
| 10-14            | 2301  | 2023  | 1995  | 1961  | 1926  | 1892  |
| 15-19            | 2176  | 1987  | 1998  | 2005  | 2008  | 2001  |
| 20-24            | 1436  | 1864  | 1883  | 1900  | 1916  | 1931  |
| 25-29            | 1212  | 1670  | 1705  | 1739  | 1769  | 1797  |
| 30-34            | 955   | 1388  | 1438  | 1489  | 1540  | 1587  |
| 35-39            | 916   | 1159  | 1193  | 1226  | 1263  | 1305  |
| 40-44            | 817   | 943   | 978   | 1015  | 1052  | 1089  |
| 45-49            | 831   | 776   | 797   | 820   | 846   | 875   |
| 50-54            | 773   | 641   | 658   | 677   | 697   | 718   |
| 55-59            | 633   | 525   | 538   | 551   | 566   | 582   |
| 60-64            | 592   | 424   | 434   | 444   | 454   | 465   |
| 65+              | 958   | 856   | 874   | 893   | 915   | 937   |
| Male             | 8861  | 8997  | 9139  | 9282  | 9564  | 9577  |
| 0-4              | 970   | 912   | 971   | 1030  | 1191  | 1146  |
| 5-9              | 1090  | 901   | 877   | 857   | 921   | 828   |
| 10-14            | 1166  | 977   | 962   | 944   | 1000  | 908   |
| 15-19            | 1091  | 974   | 975   | 975   | 1034  | 968   |
| 20-24            | 763   | 943   | 946   | 948   | 967   | 951   |
| 25-29            | 552   | 860   | 876   | 891   | 865   | 914   |
| 30-34            | 465   | 723   | 747   | 772   | 744   | 819   |
| 35-39            | 462   | 606   | 624   | 641   | 603   | 681   |
| 40-44            | 398   | 486   | 506   | 527   | 504   | 568   |
| 45-49            | 416   | 396   | 407   | 419   | 413   | 449   |
| 50-54            | 385   | 326   | 334   | 344   | 343   | 365   |
| 55-59            | 310   | 265   | 272   | 278   | 280   | 294   |
| 60-64            | 301   | 212   | 217   | 222   | 227   | 233   |
| 65+              | 492   | 416   | 425   | 434   | 472   | 453   |
| Female           | 8879  | 9052  | 9221  | 9391  | 9564  | 9737  |
| 0-4              | 969   | 1001  | 1065  | 1129  | 1191  | 1252  |
| 5-9              | 1111  | 979   | 956   | 937   | 921   | 908   |
| 10-14            | 1135  | 1046  | 1033  | 1017  | 1000  | 984   |
| 15-19            | 1085  | 1013  | 1023  | 1030  | 1034  | 1033  |
| 20-24            | 673   | 921   | 937   | 952   | 967   | 980   |

TABLE 2.1 (contd.): POPULATION BY AGE AND SEX, TRASHIYANGTSE,  
2005 TO 2010

| Age-group by sex | 2005 | 2006 | 2007 | 2008 | 2009 | 2010 |
|------------------|------|------|------|------|------|------|
| 25-29            | 660  | 810  | 829  | 848  | 865  | 883  |
| 30-34            | 490  | 665  | 691  | 717  | 744  | 768  |
| 35-39            | 454  | 553  | 569  | 585  | 603  | 624  |
| 40-44            | 419  | 457  | 472  | 488  | 504  | 521  |
| 45-49            | 415  | 380  | 390  | 401  | 413  | 426  |
| 50-54            | 388  | 315  | 324  | 333  | 343  | 353  |
| 55-59            | 323  | 260  | 266  | 273  | 280  | 288  |
| 60-64            | 291  | 212  | 217  | 222  | 227  | 233  |
| 65+              | 466  | 440  | 449  | 459  | 472  | 483  |

Note: Figure for the year 2006 onwards are based on the projected population

Source: PHCB 2005 and Figures for the year 2006 onwards are based on the projected population

TABLE 3.1: NUMBER OF SCHOOLS, INSTITUTIONS, TEACHERS AND STUDENTS, TRASHIYANGTSE 2008 TO 2010

| Details                            | GPS   | PS | LSS   | MSS | HSS | College | Pvt. | Other Inst. | NFE Centres | Daycare Centres | Total |
|------------------------------------|-------|----|-------|-----|-----|---------|------|-------------|-------------|-----------------|-------|
| <b>2008</b>                        |       |    |       |     |     |         |      |             |             |                 |       |
| Number of schools and institutions | 23    |    | 5     | 1   | 1   | 0       | 0    | 1           | 17          | 0               | 48    |
| Teaching staff                     |       |    |       |     |     |         |      |             |             |                 |       |
| Bhutanese                          | 70    |    | 57    | 25  | 14  |         |      | 15          | 17          |                 | 198   |
| Male                               | 57    |    | 44    | 15  | 12  |         |      | 12          | 8           |                 | 148   |
| Female                             | 13    |    | 13    | 10  | 1   |         |      | 3           | 9           |                 | 19    |
| Non-Bhutanese                      |       |    |       | 1   | 9   |         |      |             |             |                 | 10    |
| Male                               |       |    |       | 1   | 8   |         |      |             |             |                 | 9     |
| Female                             |       |    |       | 0   | 1   |         |      |             |             |                 | 1     |
| Temporary teachers                 | 14    |    | 10    |     | 1   |         |      |             |             |                 | 25    |
| Male                               | 14    |    | 8     |     | 1   |         |      |             |             |                 | 23    |
| Female                             | 0     |    | 2     |     | 0   |         |      |             |             |                 | 2     |
| Number of students                 | 2,040 |    | 1,996 | 653 | 513 |         |      | 105         | 286         |                 | 5,593 |
| Male                               | 1026  |    | 988   | 362 | 291 |         |      | 56          | 79          |                 | 2802  |
| Female                             | 1014  |    | 1008  | 291 | 222 |         |      | 49          | 207         |                 | 2791  |
| Student to teacher ratio           | 24    |    | 30    | 26  | 34  |         |      | 7           | 17          |                 |       |

TABLE 3.1 (contd.): NUMBER OF SCHOOLS, INSTITUTIONS, TEACHERS AND STUDENTS, TRASHIYANGTSE 2008 TO 2010

| Details                            | CPS   | PS | LSS   | MSS | HSS | College | Pvt. | Other Inst. | NFE Centres | Daycare Centres | Total |
|------------------------------------|-------|----|-------|-----|-----|---------|------|-------------|-------------|-----------------|-------|
| <b>2009</b>                        |       |    |       |     |     |         |      |             |             |                 |       |
| Number of schools and institutions | 23    |    | 5     | 1   | 1   |         |      | 1           | 19          |                 | 50    |
| Teaching staff                     |       |    |       |     |     |         |      |             |             |                 |       |
| Bhutanese                          | 84    |    | 67    | 24  | 18  |         |      | 15          | 19          |                 | 227   |
| Male                               | 69    |    | 44    | 14  | 16  |         |      | 12          | 9           |                 | 164   |
| Female                             | 15    |    | 23    | 10  | 2   |         |      | 3           | 10          |                 | 63    |
| Non-Bhutanese                      |       |    | 1     | 1   | 9   |         |      |             |             |                 | 11    |
| Male                               |       |    | 1     | 1   | 8   |         |      |             |             |                 | 10    |
| Female                             |       |    |       |     | 1   |         |      |             |             |                 | 1     |
| Temporary teachers                 | 26    |    | 8     |     |     |         |      |             |             |                 | 34    |
| Male                               | 22    |    | 5     |     |     |         |      |             |             |                 | 27    |
| Female                             | 4     |    | 3     |     |     |         |      |             |             |                 | 7     |
| Number of students                 | 2,045 |    | 2,092 | 674 | 504 |         |      | 101         | 323         |                 | 5,739 |
| Male                               | 1,006 |    | 1,036 | 370 | 294 |         |      | 58          | 76          |                 | 2,840 |
| Female                             | 1,039 |    | 1,056 | 304 | 210 |         |      | 43          | 247         |                 | 2,899 |
| Student to teacher ratio           | 19    |    | 28    | 27  | 19  |         |      | 7           | 17          |                 | 117   |
| <b>2010</b>                        |       |    |       |     |     |         |      |             |             |                 |       |
| Number of schools and institutions | 23    |    | 5     | 1   | 1   |         |      | 1           | 17          |                 | 48    |
| Teaching staff                     |       |    |       |     |     |         |      |             |             |                 |       |

TABLE 3.1 (contd.): NUMBER OF SCHOOLS, INSTITUTIONS, TEACHERS AND STUDENTS, TRASHIYANGTSE 2008 TO 2010

| Details                  | CPS   | PS | LSS   | MSS | HSS | College | Pvt. | Other Inst. | NFE Centres | Daycare Centres | Total |
|--------------------------|-------|----|-------|-----|-----|---------|------|-------------|-------------|-----------------|-------|
| Bhutanese                | 92    |    | 68    | 28  | 16  |         |      | 15          | 17          |                 | 236   |
| Male                     | 77    |    | 48    | 18  | 14  |         |      | 12          | 7           |                 | 176   |
| Female                   | 15    |    | 20    | 10  | 2   |         |      | 3           | 10          |                 | 60    |
| Non-Bhutanese            |       |    |       | 3   | 9   |         |      |             |             | 0               | 12    |
| Male                     |       |    |       | 3   | 7   |         |      |             |             | 0               | 10    |
| Female                   |       |    |       | 0   | 2   |         |      |             |             | 0               | 2     |
| Temporary teachers       | 37    |    | 7     |     |     |         |      |             |             | 0               | 44    |
| Male                     | 33    |    | 3     |     |     |         |      |             |             | 0               | 36    |
| Female                   | 4     |    | 4     |     |     |         |      |             |             | 0               | 8     |
| Number of students       | 2,029 |    | 2,028 | 725 | 535 |         |      | 129         | 201         | 0               | 5,647 |
| Male                     | 1,012 |    | 999   | 374 | 294 |         |      | 81          | 56          | 0               | 2,816 |
| Female                   | 1,017 |    | 1,029 | 351 | 241 |         |      | 48          | 145         | 0               | 2,831 |
| Student to teacher ratio | 16    |    | 27    | 23  | 21  |         |      | 9           | 12          |                 |       |

Source: Education Sector/ Zorig choesum Office, Trashiyangtse Dzongkhag



TABLE 3.2: SCHOOL ENROLMENT BY LEVEL OF EDUCATION, TRASHIYANGTSE,  
2008 TO 2010

| Class           | 2008        | 2009        | 2010        |
|-----------------|-------------|-------------|-------------|
| Primary level   |             |             |             |
| Total           | <b>3653</b> | <b>3693</b> | <b>3576</b> |
| Class PP        | 552         | 573         | 513         |
| Class I         | 538         | 511         | 502         |
| Class II        | 489         | 546         | 529         |
| Class III       | 577         | 495         | 534         |
| Class IV        | 562         | 597         | 525         |
| Class V         | 515         | 502         | 524         |
| Class VI        | 420         | 469         | 449         |
| Male            | <b>1840</b> | <b>1845</b> | <b>1790</b> |
| Class PP        | 266         | 279         | 255         |
| Class I         | 286         | 246         | 247         |
| Class II        | 266         | 284         | 259         |
| Class III       | 290         | 267         | 270         |
| Class IV        | 277         | 303         | 288         |
| Class V         | 253         | 244         | 257         |
| Class VI        | 202         | 222         | 214         |
| Female          | <b>1813</b> | <b>1848</b> | <b>1786</b> |
| Class PP        | 286         | 294         | 258         |
| Class I         | 252         | 265         | 255         |
| Class II        | 223         | 262         | 270         |
| Class III       | 287         | 228         | 264         |
| Class IV        | 285         | 294         | 237         |
| Class V         | 262         | 258         | 267         |
| Class VI        | 218         | 247         | 235         |
| Secondary level |             |             |             |
| Total           | <b>1549</b> | <b>1619</b> | <b>1741</b> |
| Class VII       | 387         | 404         | 462         |
| Class VIII      | 315         | 369         | 350         |
| Class IX        | 280         | 279         | 358         |
| Class X         | 258         | 257         | 246         |
| Class XI        | 157         | 155         | 170         |
| Class XII       | 152         | 158         | 155         |
| Male            | <b>827</b>  | <b>861</b>  | <b>891</b>  |
| Class VII       | 167         | 198         | 213         |
| Class VIII      | 163         | 168         | 175         |

TABLE 3.2 (contd.): SCHOOL ENROLMENT BY LEVEL OF EDUCATION,  
TRASHIYANGTSE, 2008 TO 2010

| Class         | 2008       | 2009       | 2010       |
|---------------|------------|------------|------------|
| Class IX      | 146        | 140        | 164        |
| Class X       | 133        | 136        | 135        |
| Class XI      | 112        | 106        | 101        |
| Class XII     | 106        | 114        | 103        |
| <b>Female</b> | <b>722</b> | <b>761</b> | <b>850</b> |
| Class VII     | 220        | 206        | 249        |
| Class VIII    | 152        | 201        | 175        |
| Class IX      | 134        | 139        | 194        |
| Class X       | 125        | 121        | 111        |
| Class XI      | 45         | 49         | 69         |
| Class XII     | 46         | 47         | 52         |

Source: Education Sector, Trashiyangtse Dzongkhag

TABLE 3.3: STUDENTS BY AGE-GROUP, SEX AND EDUCATION LEVEL,  
TRASHIYANGTSE, 2008 TO 2010

| Details  | 2008        | 2009        | 2010        |
|--|-------------|-------------|-------------|
| Students in primary school level (Class PP-VI) |             |             |             |
| Total  | <b>3653</b> | <b>3693</b> | <b>3576</b> |
| Age < 6 years                                  | 57          | 78          | 89          |
| Age 6-12 years                                 | 2843        | 2847        | 2824        |
| Age 13 & above                                 | 753         | 768         | 663         |
| Male   | <b>1840</b> | <b>1812</b> | <b>1788</b> |
| Age < 6 years                                  | 30          | 32          | 43          |
| Age 6-12 years                                 | 1425        | 1442        | 1411        |
| Age 13 & above                                 | 385         | 371         | 334         |
| Female   | <b>1813</b> | <b>1881</b> | <b>1788</b> |
| Age < 6 years                                  | 27          | 46          | 46          |
| Age 6-12 years                                 | 1418        | 1405        | 1413        |
| Age 13 & above                                 | 368         | 397         | 329         |
| Student in LSS level (Class VII-VIII)          |             |             |             |
| Total  | <b>701</b>  | <b>1271</b> | <b>825</b>  |
| Age < 13 years                                 | 16          | 17          | 26          |
| Age 13-14 years                                | 186         | 220         | 259         |
| Age 15 & above                                 | 499         | 1034        | 540         |
| Male   | <b>309</b>  | <b>370</b>  | <b>394</b>  |
| Age < 13 years                                 | 5           | 10          | 12          |
| Age 13-14 years                                | 65          | 97          | 111         |
| Age 15 & above                                 | 239         | 263         | 271         |
| Female   | <b>299</b>  | <b>400</b>  | <b>431</b>  |
| Age < 13 years                                 | 11          | 7           | 14          |
| Age 13-14 years                                | 28          | 119         | 148         |
| Age 15 & above                                 | 260         | 274         | 269         |
| Students in MSS level (Class IX-X)             |             |             |             |
| Total  | <b>539</b>  | <b>536</b>  | <b>604</b>  |
| Age < 15 years                                 | 13          | 13          | 16          |
| Age 15-16 years                                | 160         | 159         | 194         |
| Age 17 & above                                 | 366         | 364         | 394         |
| Male   | <b>281</b>  | <b>276</b>  | <b>301</b>  |
| Age < 15 years                                 | 6           | 8           | 6           |
| Age 15-16 years                                | 93          | 81          | 89          |
| Age 17 & above                                 | 182         | 187         | 206         |
| Female   | <b>258</b>  | <b>260</b>  | <b>303</b>  |
| Age < 15 years                                 | 7           | 5           | 10          |

TABLE 3.3 (contd.): STUDENTS BY AGE-GROUP, SEX AND EDUCATION LEVEL,  
TRASHIYANGTSE, 2008 TO 2010

| Details                              | 2008       | 2009       | 2010       |
|--------------------------------------|------------|------------|------------|
| Age 15-16 years                      | 67         | 78         | 105        |
| Age 17 & above                       | 184        | 177        | 188        |
| Students in HSS level (Class XI-XII) |            |            |            |
| <b>Total</b>                         | <b>309</b> | <b>697</b> | <b>325</b> |
| Age < 17 years                       | 5          | 2          | 18         |
| Age 17-18 years                      | 83         | 93         | 132        |
| Age 19 & above                       | 221        | 602        | 175        |
| <b>Male</b>                          | <b>218</b> | <b>220</b> | <b>203</b> |
| Age < 17 years                       | 3          | 1          | 13         |
| Age 17-18 years                      | 52         | 60         | 100        |
| Age 19 & above                       | 163        | 159        | 90         |
| <b>Female</b>                        | <b>158</b> | <b>190</b> | <b>122</b> |
| Age < 17 years                       | 69         | 95         | 5          |
| Age 17-18 years                      | 31         | 93         | 32         |
| Age 19 & above                       | 58         | 2          | 85         |

Source: Education Sector, Trashiyangtse Dzongkhag

TABLE 3.4: SANITATION, WATER SUPPLY AND TRAVEL DISTANCE,  
TRASHIYANGTSE, 2008 TO 2010

| Details                                  | 2008 | 2009 | 2010 |
|--|------|------|------|
| Number of schools with toilet facilities |      |      |      |
| Flush toilet                             | 20   | 22   | 26   |
| Pit latrine                              | 10   | 8    | 4    |
| Other type                               | 0    | 0    | 0    |
| No toilet                                | 0    | 0    | 0    |
| Number of schools with water facilities  |      |      |      |
| Tap/pipe water                           | 30   | 30   | 30   |
| Pond/spring                              | 0    | 0    | 0    |
| Stream                                   | 0    | 0    | 0    |
| Other                                    | 0    | 0    | 0    |

Source: Education Sector, Trashiyangtse Dzongkhag

TABLE 4.1: TYPE OF HEALTH INFRASTRUCTURE, FACILITIES & PERSONNEL,  
TRASHIYANGTSE, 2007 TO 2009

| Details                              | 2007  | 2008  | 2009  |
|--------------------------------------|-------|-------|-------|
| Number of hospitals                  | 1     | 1     | 1     |
| Number of BHUs                       | 7     | 7     | 7     |
| BHU grade I                          | 0     | 0     | 0     |
| BHU grade II                         | 7     | 7     | 7     |
| Number of ORCs                       | 23    | 26    | 26    |
| Number of indigenous units           | 1     | 1     | 1     |
| Number of doctors                    | 1     | 1     | 1     |
| Number of hospital/BHU beds          | 48    | 48    | 55    |
| Persons per doctor                   | 18360 | 18673 | 18994 |
| Persons per hospital bed             | 382.5 | 389   | 345   |
| Total morbidity attendance           | na    | na    | na    |
| Health Assistants                    | 4     | 5     | 5     |
| Basic health workers                 | 10    | 10    | 9     |
| Sister and nurses                    | 13    | 14    | 14    |
| Technicians                          | 3     | 4     | 4     |
| Indigenous dungtsho                  | 1     | 1     | 1     |
| Indigenous compounders/Menpas        | 1     | 1     | 1     |
| Malaria workers                      | 0     | 0     | 0     |
| Village health workers               | 46    | 44    | 43    |
| Births attended by skilled personnel | na    | na    | na    |
| Number of births in medical facility | na    | na    | 390   |
| Number of children immunized         |       |       |       |
| Polio                                | 324   | 385   | 378   |
| DPTH                                 | 353   | 389   | 378   |
| Measles                              | 470   | 416   | 390   |
| Others                               | na    | na    | na    |
| Family planning acceptors by type    |       |       |       |
| Condom distributed                   | 28616 | 50023 | 64804 |
| Pills                                | na    | na    | 525   |
| Injection DMPA                       | na    | na    | 1565  |
| IUD                                  | na    | na    | 31    |
| Vasectomy                            | na    | na    | 285   |
| Tubectomy                            | na    | na    | 75    |
| Others                               | 0     | 0     | 0     |

Source: Health Sector, Trashiyangtse Dzongkhag

TABLE 4.2: MORBIDITY, TRASHIYANGTSE, 2007 TO 2009

| Type of diseases (Incidence)                     | 2007 | 2008 | 2009 |
|--|------|------|------|
| Typhoid  | 91   | 167  | 64   |
| Diarrhoea  | 2013 | 2283 | 2178 |
| Dysentery  | 892  | 919  | 832  |
| Tuberculosis                                     | 7    | 18   | 5    |
| Early Syphilis                                   | 3    | 3    | 0    |
| Sexually transmitted disease, excluding HIV/AIDS | 8    | 43   | 80   |
| Diabetes   | 6    | 3    | 5    |
| Conjunctivitis                                   | 1279 | 1005 | 1168 |

Note: "0" no case

Source: Health Sector, Trashiyangtse Dzongkhag

TABLE 5.1: NUMBER OF INDUSTRIAL ESTABLISHMENT & TRANSPORT,  
TRASHIYANGTSE, 2007 TO 2009

| Details                                    | 2007 | 2008 | 2009 |
|--|------|------|------|
| Trade and Industries (Number)              | 29   | 43   | 52   |
| Micro & retail trade licences issued       | 15   | 14   | 20   |
| Micro & retail trade licences in operation | 15   | 14   | 20   |
| Wholesale trade licences issued            | 0    | 1    | 1    |
| Wholesale trade licences in operation      | 0    | 1    | 1    |
| Services licences issued                   | 6    | 7    | 15   |
| Services licences in operation             | 5    | 5    | 7    |
| Manufacturing licenses issued              | 8    | 7    | 12   |
| Manufacturing licenses in operation        | 4    | 5    | 7    |
| Public Transport operators (Numbers)       |      |      |      |
| Bus  | 1    | 1    | 1    |
| Taxi                                       | 16   | 20   | 26   |
| Others                                     | 102  | 119  | 125  |
| Industries by type (Number)                |      |      |      |
| Agro based                                 | 0    | 0    | 1    |
| Forestry based                             | 7    | 7    | 11   |
| Mineral based                              | 0    | 0    | 0    |
| Others                                     | 7    | 7    | 15   |
| Industries by scale (Number)               |      |      |      |
| Large                                      | 0    | 0    | 0    |
| Medium                                     | 0    | 0    | 0    |
| Small                                      | 0    | 0    | 3    |
| Cottage                                    | 14   | 14   | 27   |
| Contract firms (Number)                    |      |      |      |
| A  | 0    | 0    | 0    |
| B  | 0    | 0    | 0    |
| C  | na   | na   | 36   |
| D (Petty)                                  | 128  | 158  | 171  |

Source: Regional Trade office, Mongar and RSTA Base Office, Trashiyangtse

TABLE 6.1: RENEWABLE NATURAL RESOURCES, TRASHIYANGTSE,  
2007 TO 2009

| <b>Agriculture</b>                           | <b>2007</b> | <b>2008</b> | <b>2009</b> |
|--|-------------|-------------|-------------|
| Irrigation for agriculture                   |             |             |             |
| Number of irrigation channels                | n.a         | n.a         | 32          |
| Functional                                   | n.a         | n.a         | 32          |
| Non Functional                               | n.a         | n.a         | n.a         |
| Total length of channels (Km)                | 96.8        | 96.8        | 96.8        |
| Area covered by irrigation (Acres)           | 121.49      | 184.82      | 148.25      |
| Number of households benefitted              | 183         | 162         | 258         |
| Number of food processing units              | 0           | 0           | 0           |
| Number of agriculture mills *                | na          | 168         | 168         |
| Number of livestock product processing units | 0           | 0           | 1           |
| Number of farmer association/groups          |             |             |             |
| Agriculture                                  | 3           | 3           | 1           |
| Livestock                                    | 3           | 3           | 3           |
| Forestry                                     | 1           | 3           | 6           |
| Number of power tillers                      | 3           | 10          | 11          |

Note:\* Including two traditional mills

Source : Agriculture Sector, Trashiyangtse Dzongkhag & Agriculture census 2009.



TABLE 6.2: AGRICULTURAL PRODUCTION, TRASHIYANGTSE,  
2007 TO 2009

| Details                       | 2007    | 2008    | 2009    |
|-------------------------------|---------|---------|---------|
| <b>Paddy</b>                  |         |         |         |
| Area (Acres)                  | 1377    | 2041    | 1477    |
| Production (MT)               | 1814000 | 2570000 | 1656000 |
| Price per Kg(Nu.)             | na      | na      | na      |
| <b>Maize</b>                  |         |         |         |
| Area (Acres)                  | 5772    | 137     | 1930    |
| Production (MT)               | 3827000 | 159000  | 2236000 |
| Price per Kg(Nu.)             | na      | na      | na      |
| <b>Wheat</b>                  |         |         |         |
| Area (Acres)                  | 151     | 332     | 39      |
| Production (MT)               | 91000   | 131000  | 21000   |
| Price per Kg(Nu.)             | na      | na      | na      |
| <b>Barley</b>                 |         |         |         |
| Area (Acres)                  | 25      | 291     | 32      |
| Production (MT)               | 22000   | 289000  | 17000   |
| Price per Kg(Nu.)             | na      | na      | na      |
| <b>Buckwheat</b>              |         |         |         |
| Area (Acres)                  | 35      | 582     | 37      |
| Production (MT)               | 16000   | 367000  | 21000   |
| Price per Kg(Nu.)             | na      | na      | na      |
| <b>Millet</b>                 |         |         |         |
| Area (Acres)                  | 296     | 800     | 454     |
| Production (MT)               | 170000  | 484000  | 393000  |
| Price per Kg(Nu.)             | na      | na      | na      |
| <b>Fruits</b>                 |         |         |         |
| <b>Apples</b>                 |         |         |         |
| Number of fruit bearing trees | 100     | 504     | 477     |
| Production (Kg)               | 3000    | 9000    | 9000    |
| Production (Nu.)              | na      | na      | na      |
| <b>Oranges/ Mandarin</b>      |         |         |         |
| Number of fruit bearing trees | 13832   | 12566   | 9691    |
| Production (Kg)               | 258000  | 420000  | 433000  |
| Production (Nu.)              | na      | na      | na      |
| <b>Banana</b>                 |         |         |         |
| Number of fruit bearing trees | 1082    | 11588   | 3137    |
| Production (Kg)               | 43000   | 121000  | 24000   |
| Production (Nu.)              | na      | na      | na      |

TABLE 6.2 (contd.): AGRICULTURAL PRODUCTION, TRASHIYANGTSE,  
2007 TO 2009

| Details                       | 2007     | 2008   | 2009    |
|-------------------------------|----------|--------|---------|
| Pear                          |          |        |         |
| Number of fruit bearing trees | 421      | 904    | 329     |
| Production (Kg)               | 8000     | 25000  | 15000   |
| Production (Nu.)              | na       | na     | na      |
| Plum                          |          |        |         |
| Number of fruit bearing trees | 220      | 2894   | 294     |
| Production (Kg)               | 12000    | 78000  | 20000   |
| Production (Nu.)              | na       | na     | na      |
| Areca Nut                     |          |        |         |
| Production (Pon)              | 0        | 0      | 0       |
| Production (Nu.)              | 0        | 0      | 0       |
| Vegetables and Spices         |          |        |         |
| Potato                        |          |        |         |
| Production (kg)               | 10150000 | 62000  | 1260000 |
| Production (Nu.)              | na       | 15     | 15      |
| Chili                         |          |        |         |
| Production (kg)               | 820000   | 754000 | 494000  |
| Production (Nu.)              | na       | 40     | 45      |
| Onion                         |          |        |         |
| Production (kg)               | 12000    | 0      | 19000   |
| Production (Nu.)              | na       | 30     | 45      |
| Cabbage                       |          |        |         |
| Production (kg)               | 104000   | 242000 | 104000  |
| Production (Nu.)              | na       | 20     | 20      |
| Cauliflower                   |          |        |         |
| Production (kg)               | 15000    | 113000 | 46000   |
| Production (Nu.)              | na       | 25     | 30      |
| Asparagus                     |          |        |         |
| Production (Bundles)          | 22000    | 27000  | 4000    |
| Production (Nu.)              | na       | 40     | 45      |
| Tomato                        |          |        |         |
| Production (Kg)               | 0        | 9000   | 34000   |
| Production (Nu.)              | na       | 30     | 35      |
| Carrot                        |          |        |         |
| Production (Kg)               | 0        | 9000   | 5000    |
| Production (Nu.)              | na       | 30     | 35      |

TABLE 6.2 (contd.): AGRICULTURAL PRODUCTION, TRASHIYANGTSE,  
2007 TO 2009

| Details               | 2007   | 2008   | 2009        |
|-----------------------|--------|--------|-------------|
| Production (Kg)       | 0      | 63000  | 37000       |
| Production (Nu.)      | na     | 20     | 25          |
| Raddish               |        |        |             |
| Production (Kg)       | 164000 | 270000 | 163000      |
| Production (Nu.)      | 10     | 10     | 10          |
| Ginger                |        |        |             |
| Production (Kg)       | 5000   | 0      | 8000        |
| Production (Nu.)      |        |        |             |
| Cardamom              |        |        |             |
| Production (Kg)       | 0      | 0      | 0           |
| Production (Nu.)      | 0      | 0      | 0           |
| Garlic                |        |        |             |
| Production (Kg)       | 60000  | 75000  | 65000       |
| Production (Nu.)      | 45     | 45     | 50          |
| Oil seeds and legumes |        |        |             |
| Lentils               |        |        |             |
| Production (Kg)       | 0      | 0      | 0           |
| Production (Nu.)      | 0      | 0      | 0           |
| Mustards              |        |        |             |
| Production (Kg)       | 9000   | 24000  | 11000       |
| Production (Nu.)      | 60     | 60     | 65 (Bottle) |
| Beans                 |        |        |             |
| Production (MT)       | 58000  | 111000 | 50176000    |
| Production (Nu.)      | 30     | 30     | 35          |

Source : Agriculture Sector, Trashiyangtse Dzongkhag & Agriculture census 2009.

Table 6.3: LIVESTOCK POPULATION, TRASHIYANGTSE, 2007 TO 2009

| Details            | 2007 | 2008 | 2009  |
|--------------------|------|------|-------|
| Livestock (Number) |      |      |       |
| Cattle             |      |      |       |
| Local breed        | 7232 | 9415 | 11120 |
| male               | 1827 | 4274 | 5800  |
| Female             | 5405 | 5141 | 5320  |
| Improved breed     | 2075 | 1905 | 2220  |
| male               | 386  | 396  | 420   |
| Female             | 1689 | 1509 | 1800  |
| Mithun             | 2338 | 1869 | 1789  |
| Bufallo            | 0    | 0    | 0     |
| Male               | 0    | 0    | 0     |
| Female             | 0    | 0    | 0     |
| Horse              | 1289 | 1308 | 1005  |
| Local breed        | 1227 | 1263 | 976   |
| Improved breed     | 62   | 45   | 29    |
| Yak                | 430  | 622  | 578   |
| Male               | 200  | 256  | 228   |
| Female             | 230  | 366  | 350   |
| Sheep              | 42   | 34   | 27    |
| Local breed        | 42   | 34   | 27    |
| Improved breed     | 0    | 0    | 0     |
| Pig                | 1228 | 886  | 895   |
| Local breed        | 588  | 434  | 385   |
| Improved breed     | 640  | 452  | 510   |
| Poultry            | 2932 | 2236 | 2590  |
| Local breed        | 1856 | 1621 | 1513  |
| Improved breed     | 1076 | 615  | 1077  |
| Goat               | 173  | 89   | 170   |

Source : Livestock Sector, Trashiyangtse Dzongkhag

Table 6.4: LIVESTOCK PRODUCTS, TRASHIYANGTSE, 2007 TO 2009

| Details               | 2007   | 2008   | 2009    |
|-----------------------|--------|--------|---------|
| Livestock products    |        |        |         |
| Fresh Milk (Liters)   | 670994 | 973601 | 1129320 |
| Butter (Kg)           | 54279  | 59563  | 72000   |
| Fresh Cheese (Kg)     | 91750  | 95000  | 107020  |
| Processed cheese (kg) | 0      | 0      | 0       |
| Eggs (Dozen)          | 12261  | 4179   | 7589    |
| Fish (Kg)             | 0      | 0      | 0       |
| Beef (Kg)             | 26415  | 49787  | 35000   |
| Pork (Kg)             | 21120  | 15543  | 10535   |
| Yak Meat (Kg)         | 300    | 2750   | 3500    |
| Mutton (Kg)           | 250    | 157    | 108     |
| Honey (Gm)            | 0      | 0      | 0       |
| Chicken (Kg)          | 16     | 24     | 120     |

Source : Dzongkhag Livestock Office, Trashiyangtse

Table 6.5: FORESTRY PRODUCTS, TRASHIYANGTSE, 2007 TO 2009

| Details                            | 2007      | 2008     | 2009      |
|------------------------------------|-----------|----------|-----------|
| Wood Forest Product                |           |          |           |
| Log Form (Cft)                     | 104180.08 | 90988.32 | 163930.75 |
| Fire wood (Cubic metres)           | 314.5     | 895.27   | 2105.2    |
| Flag Poles (Number)                | 2775      | 2380     | 4486      |
| Shinglap (Number of trees)         | na        | na       | na        |
| Cham (Number of trees)             | 240       | 563      | 1947      |
| Tsim (Number of trees)             | 259       | 318      | 637       |
| Non-Wood Forest Product            |           |          |           |
| Mushroom (Kg)                      | na        | na       | na        |
| Mushroom (Nu.)                     | na        | na       | na        |
| Medicinal and Aromatic plants (Kg) | na        | na       | na        |
| Cordyceps (Kg)                     | na        | na       | na        |
| Cordyceps (Nu.)                    | na        | na       | na        |
| Sand (Truck Load)                  | 380       | 292      | 202       |
| Stones (Truck Load)                | 415       | 200      | 166       |
| Bamboo (Number)                    | 11569     | 6773     | 12532     |
| Cane (Bundles)                     | 0         | 0        | 0         |
| Lemon grass (Kg)                   | 0         | 0        | 0         |

Source : NRDCL & Range office, Trashiyangtse

TABLE 7.1: INFRASTRUCTURE, TRASHIYANGTSE, 2007 TO 2009

| Details                  | 2007 | 2008  | 2009 |
|--------------------------|------|-------|------|
| Roads (Length in Km)     |      |       |      |
| Farm roads               | na   | 41.73 | 60.2 |
| Feeder roads             | na   | 23.5  | 27   |
| Forest roads             | 10.1 | 10.1  | 10.1 |
| Highways/Dzongkhag roads | 44   | 44    | 44   |
| Bridges (Number)         |      |       |      |
| Suspension bridges       | 13   | 13    | 13   |
| Suspended                | 4    | 4     | 4    |
| Bailey bridges           | 0    | 0     | 0    |
| Traditional bridges      | 0    | 0     | 0    |
| Auto workshop centres    | 2    | 2     | 2    |
| Bus stations             | 1    | 1     | 1    |
| Post offices             | 2    | 2     | 2    |
| Banks                    | 1    | 1     | 1    |

Source: Agriculture Sector, Trashiyangtse Dzongkhag

TABLE 8.1: TELECOMMUNICATION, TRASHIYANGTSE, 2007 TO 2009

| Details                                     | 2007 | 2008 | 2009 |
|---|------|------|------|
| Telecommunications (Number)                 |      |      |      |
| Households with fixed telephone connections | 125  | 251  | 247  |
| Community information centres               | 2    | 2    | 2    |
| Gewogs accessible to mobile services        | 8    | 8    | 8    |
| Households with internet access             | 25   | 51   | 62   |

Source: Telecom office, Tashiyangtse

TABLE 9.1: ENVIRONMENT, TRASHIYANGTSE, 2007 TO 2009

| Details   | 2007   | 2008   | 2009   |
|---|--------|--------|--------|
| Total cultivated land (Acres)                         |        |        |        |
| Temperature (Degree Celcius)                          |        |        |        |
| Avg. Max (Annual)                                     | 23.6   | 23.6   | 23.7   |
| Avg. Min (Annual)                                     | 3.6    | 3.6    | 3.5    |
| Rainfall (Millimeter)                                 |        |        |        |
| Avg. Annual rainfall                                  | 116.11 | 116.11 | 101.66 |
| Number of snowfall occurred at Dzongkhag head quarter | 1      | 0      | 0      |
| Damages caused by landslides                          |        |        |        |
| Farmland (acres)                                      | na     | na     | 5.16   |
| Houses (Number)                                       | na     | na     | na     |
| Roads (Km)  | na     | na     | na     |
| Damages caused by floods                              |        |        |        |
| Farmland (acres)                                      | na     | na     | na     |
| Houses (Number)                                       | na     | na     | na     |
| Roads (Km)  | na     | na     | na     |
| Crops affected by drought (acres)                     | na     | 4.60   | 4.60   |
| Crops damaged by wild animals (acres)                 | na     | 72.46  | 72.46  |
| Incidence of earthquake (Number of cases reported)    | na     | na     | 1166   |
| Houses damaged by earthquakes (Number)                | na     | na     | 1166   |
| Number of forest fires                                | na     | 1      | 3      |
| Acreage destroyed by forest fires                     | na     | 2      | 453    |
| Acreage of reforestation                              | na     | 8.316  | 6.74   |
| Houses/structures damaged by fires (Number)           | na     | na     | 3      |
| Mining sites (Number)                                 | na     | na     | na     |
| Quarry sites (Number)                                 | na     | na     | na     |
| Municipal waste disposal sites (Number)               | 1      | 1      | 1      |
| Environmental clearance issued                        | 7      | 5      | 8      |

Source: Agriculture census 2009 and Environment Sector, Trashiyangtse Dzongkhag

TABLE 10.1: 9TH & 10TH DZONGKHAG FIVE YEAR PLAN OUTLAYS, TRASHIYANGTSE,  
( in million Nu.)

| Sectors                             | 9 FYP   |         | 10 FYP  |         |
|-------------------------------------|---------|---------|---------|---------|
|                                     | Current | Capital | Current | Capital |
| Civil                               | 56.7    | 49.0    | 0.0     | 27.9    |
| Agriculture                         | 20.4    | 1.9     | 6.7     | 11.7    |
| Livestock                           | 21.8    | 3.2     | 15.0    | 17.5    |
| Forestry                            | 3.4     | 2.9     | 19.1    | 21.7    |
| Education                           | 140.2   | 91.8    | 2.0     | 441.1   |
| Health                              | 40.4    | 14.3    | 91.0    | 93.5    |
| Urban Development & Housing (MoWHS) | 4.0     | 72.1    | 51.5    | 53.1    |
| Roads                               | na      | na      | na      | na      |
| Bhutan post                         | na      | na      | na      | na      |
| Telecommunication                   | na      | na      | na      | na      |
| Power                               | na      | na      | na      | na      |
| Trade & Industry                    | na      | na      | na      | na      |
| Total                               |         |         |         |         |
| Total plan outlay                   |         |         |         |         |

Source: 10th FYP Document and Planning Unit, Trashiyangtse Dzongkhag

TABLE 10.2: 9TH & 10TH DZONGKHAG FIVE YEAR PLAN EXPENDITURE,  
TRASHIYANGTSE

( in million Nu.)

| Sectors                     | 9 FYP   |         | 10 FYP  |         |
|-----------------------------|---------|---------|---------|---------|
|                             | Current | Capital | Current | Capital |
| Civil                       | 78.4    | 82.9    | 36.7    | 16.0    |
| Agriculture                 | 17.4    | 16.6    | 9.4     | 23.0    |
| Livestock                   | 25.5    | 8.3     | 10.2    | 6.0     |
| Forestry                    | 10.3    | 2.7     | 4.9     | 12.9    |
| Education                   | 222.4   | 71.1    | 174.3   | 70.7    |
| Health                      | 56.8    | 8.5     | 25.3    | 1.5     |
| Urban Development & Housing | 32.6    | 62.8    | 8.3     | 18.3    |
| Roads                       | na      | na      | na      | na      |
| Bhutan post                 | na      | na      | na      | na      |
| Telecommunication           | na      | na      | na      | na      |
| Power                       | na      | na      | na      | na      |
| Trade & Industry            | na      | na      | na      | na      |
| Total                       |         |         |         |         |
| Total plan expenditure      |         |         | 2.1     | 9.1     |

Source: 10th FYP Document and Planning Unit, Trashiyangtse Dzongkhag



TABLE 10.3: 9TH &amp; 10TH GEWOG FYP OUTLAYS, TRASHIYANGTSE

( In million Nu.)

| Sectors      | 9 FYP   |         | 10 FYP        |                |
|--------------|---------|---------|---------------|----------------|
|              | Current | Capital | Current       | Capital        |
| Civil        | n.a     | n.a     | 20.125        | 23.275         |
| Agriculture  | n.a     | n.a     | 0             | 67.894         |
| Livestock    | n.a     | n.a     | 0             | 21.248         |
| Forestry     | n.a     | n.a     | 0             | 13.9           |
| Education    | n.a     | n.a     | 0             | 383.36         |
| Health       | n.a     | n.a     | 0             | 15.851         |
| MoWHS        | n.a     | n.a     | 0             | 9.349          |
| <b>Total</b> | n.a     | n.a     | <b>20.125</b> | <b>534.877</b> |

Source: 10th FYP Document and Planning Unit, Trashiyangtse Dzongkhag

TABLE 10.4: 9TH &amp; 10TH GEWOG FYP EXPENDITURE, TRASHIYANGTSE

( In million Nu.)

| Sectors            | 9 FYP   |         | 10 FYP       |              |
|--------------------|---------|---------|--------------|--------------|
|                    | Current | Capital | Current      | Capital      |
| Civil              | na      | na      | 8.277        | 4.896        |
| Agriculture        | na      | na      | 0            | 36.868       |
| Livestock          | na      | na      | 0            | 1.058        |
| Forestry           | na      | na      | 0            | 1.405        |
| Education          | na      | na      | 0            | 6.505        |
| Health             | na      | na      | 0            | 1.763        |
| MoWHS              | na      | na      | 0            | 1.763        |
| Culture & Religion | na      | na      | 0            | 13.572       |
| <b>Total</b>       | na      | na      | <b>8.277</b> | <b>67.83</b> |

Source: 10th FYP Document and Planning Unit, Trashiyangtse Dzongkhag

TABLE 11.1: GROSS AND NET ENROLMENT RATIO BY EDUCATION LEVEL,  
TRASHIYANGTSE, 2005

| Details                            | 2005  |
|------------------------------------|-------|
| Primary school level (Class PP-VI) |       |
| Gross enrolment ratio              | 121.2 |
| Net enrolment ratio                | 88.5  |
| LSS level (Class VII-VIII)         |       |
| Gross enrolment ratio              | 80.0  |
| Net enrolment ratio                | 19.7  |
| MSS level (Class IX-X)             |       |
| Gross enrolment ratio              | 55.7  |
| Net enrolment ratio                | 22.2  |
| HSS level (Class XI-XII)           |       |
| Gross enrolment ratio              | 20.4  |
| Net enrolment ratio                | 6.3   |

Note: Figure available in rate

Source: BLSS 2007/SEDI 2005

TABLE 11.2: LITERACY RATE BY SEX, TRASHIYANGTSE, 2005

| Literacy rate | 2005 |
|---------------|------|
| Male          | 64.2 |
| Female        | 45.7 |
| 15-24 years   |      |
| Male          | 83.9 |
| Female        | 71.8 |

Source: SEDI 2005

TABLE 11.3: DISTANCE TO THE NEAREST SCHOOL, TRASHIYANGTSE, 2005

| Details  |    |
|--|----|
| Percent of household proximity to nearest school by foot |    |
| < 1 hr   | na |
| 1 - 2 hrs  | na |
| 2 - 3 hrs  | na |
| > 3 hrs  | na |

Source: PHCB 2005

TABLE 12.1: HEALTH FACILITIES, TRASHIYANGTSE, 2005

| Details                                      | 2005 |
|--|------|
| Population covered by health care (%)        | 95   |
| Population access to safe drinking water (%) | 86.8 |

Note: Access to improved water source indicates safe drinking water.

Source: SEDI 2005/DHO

TABLE 12.2: DISTANCE TO HEALTH CENTRES, WATER SOURCES AND  
SANITATION, TRASHIYANGTSE, 2005

| Details   | 2005 |
|---|------|
| Walking distance to health facility (% of households)             |      |
| < 1 hr  | na   |
| 1 - 2 hrs   | na   |
| 2 - 3 hrs   | na   |
| > 3 hrs   | na   |
| Sources of drinking water & sanitation facility (% of households) |      |
| Tap/pipe water  | 86.1 |
| Stream water  | 11.9 |
| Other sources   | 2    |
| With toilet facility  | 89.8 |
| Without toilet  | 10.2 |

Note: Stream water includes spring, river and pond

Source:PHCB 2005

TABLE 13.1: ECONOMIC ACTIVITIES, TRASHIYANGTSE

| Details                                       |     |
|---|-----|
| Proximity to nearest market (% of households) |     |
| <1 hr   | n.a |
| 1-2 hrs                                       | n.a |
| 2-4 hrs                                       | n.a |
| >4 hrs  | n.a |

TABLE 13.2: ACCESS TO CREDIT FACILITIES, TRASHIYANGTE

| Details   |     |
|---|-----|
| Households by access to credit/loan facilities(%) | n.a |
| Bank  | n.a |
| BDFC/RICB   | n.a |
| Relatives/friends                                 | n.a |

TABLE 14.1: EMPLOYMENT BY INDUSTRIES, AGE-GROUP AND SEX,  
TRASHIYANGTSE, 2005

| Details                              | 2005  |
|--------------------------------------|-------|
| Total labour force (Number)          | 11299 |
| Total employed (%)                   | 98.4  |
| Male                                 | 55.18 |
| Female                               | 44.82 |
| Unemployment rate                    | 1.6   |
| Total employed in Agriculture (%)    | 67.1  |
| Male                                 | 44.01 |
| Female                               | 55.99 |
| Total employed in Industries (%)     | 9.4   |
| Male                                 | 75.46 |
| Female                               | 24.54 |
| Total employed in Services (%)       | 9.9   |
| Male                                 | 79.83 |
| Female                               | 20.17 |
| Total unemployed by area (%)         |       |
| Urban                                | 1.6   |
| Rural                                | 98.4  |
| Total un-employed by education (%)   |       |
| Total unemployed grade XII and above | na    |
| Total unemployed below grade XII     | na    |
| Total under employed (%)             | na    |
| Employed by age-group (%)            |       |
| 15-17 years(15-19)                   | 5.89  |
| 18-24 years(20-24)                   | 19.67 |
| 25-64 years                          | 72.43 |
| 65 years and above                   | 2.01  |
| Unemployed by age-group (%)          |       |
| 15-17 years (15-19)                  | 30.77 |
| 18-24 years (20-24)                  | 38.46 |
| 25-64 years                          | 30.77 |
| 65 years and above                   | 0     |
| Labor force participation rate (%)   | 57.6  |
| Male participation rate              | 64    |
| Female participation rate            | 51.3  |

Source:PHCB 2005

TABLE 15.1: RENEWABLE NATURAL RESOURCES, TRASHIYANGTSE, 2009

| <b>Agriculture</b>            | <b>2009</b> |
|-------------------------------|-------------|
| Wet land holding (Number)     |             |
| Holdings < 1 acre             | 49.160      |
| Holdings 1-5 acres            | 48.574      |
| Holdings >5 acres             | 2.267       |
| Total wet land (Acres)        | 552.640     |
| Dry land holding (Number)     |             |
| Holdings < 1 acre             | 26.316      |
| Holdings 1-5 acres            | 51.364      |
| Holdings >5 acres             | 93.304      |
| Total dry land (Acres)        | 1563.030    |
| Orchard land holding (Number) |             |
| Holdings < 1 acre             | 83.333      |
| Holdings 1-5 acres            | 62.334      |
| Holdings >5 acres             | 22.333      |
| Total orchard (Acres)         | 12.160      |
| Pasture land (Acres)          | 0.100       |

Note:Figure available in Percentage

Source:Agriculture Census 2009, MoAF

TABLE 16.1: WALKING DISTANCE TO NEAREST ROAD BY HOUSEHOLDS,  
TRASHIYANGTSE, 2005

| Details   | 2005 |
|---|------|
| Walking distance to road head (% of households) |      |
| < 1 hr  | 51.7 |
| 1-2 hrs   | 12.8 |
| 2-5 hrs   | 27.3 |
| > 5 hrs   | 8.3  |

Source: SEDI 2005

TABLE 17.1: NUMBER OF HOUSEHOLDS HAVING TELECOMMUNICATION,  
TRASHIYANGTSE, 2007

| Details                    | 2007 |
|----------------------------|------|
| Households with TV sets    | 364  |
| Households owning computer | 105  |
| Households owning radios   | 3690 |

Source:BLSS 2007

TABLE 18.1 : CULTURE, TRASHIYANGTSE, 2007 TO 2009

| Details  | 2007 | 2008 | 2009 |
|--|------|------|------|
| Number of Dzongs                                 | 2    | 2    | 2    |
| Number of Chortens                               | 660  | 660  | 660  |
| Number of Lakhangs                               | 85   | 85   | 85   |
| Private  | 30   | 30   | 30   |
| Community  | 44   | 44   | 44   |
| Government                                       | 11   | 11   | 11   |
| Number of Temples                                | 0    | 0    | 0    |
| Private  | 0    | 0    | 0    |
| Community  | 0    | 0    | 0    |
| Government                                       | 0    | 0    | 0    |
| Number of Chukhor/Dungkhor                       | 55   | 55   | 55   |
| Number of religious personnel, centres and sites |      |      |      |
| Nuns   | 0    | 0    | 0    |
| Gelongs  | 140  | 140  | 155  |
| Gomchens   | 378  | 378  | 378  |
| Pawo/jomo/terda/nyerjom                          | 3    | 3    | 3    |
| Shedra   | 1    | 1    | 1    |
| Gomdeys/Drubda                                   | 2    | 2    | 2    |
| Cremation grounds                                | 1    | 1    | 1    |
| Community tshechus                               | 9    | 9    | 9    |
| Hot springs                                      | 0    | 0    | 0    |
| Menchu   | 1    | 1    | 1    |
| Pilgrimage sites (Nyes)                          | 7    | 7    | 7    |
| Drupchu  | 5    | 5    | 5    |
| Number of Cultural industries and units          |      |      |      |
| Movie making                                     | 0    | 0    | 0    |
| Weaving centre                                   | 0    | 0    | 0    |
| Dapa/phop  | 8    | 8    | 8    |
| Wood and craft                                   | 0    | 0    | 0    |
| Bhutanese paper manufacturing                    | 2    | 2    | 2    |
| Number of households manufacturing               |      |      |      |
| Dung   | 0    | 0    | 0    |
| Jaling   | 0    | 0    | 0    |
| Drum (nga)                                       | 1    | 1    | 1    |
| Bangchung  | 0    | 0    | 0    |
| Tshazow  | 2    | 2    | 2    |



TABLE 18.1 (contd.): CULTURE, TRASHIYANGTSE, 2007 TO 2009

| Details                           | 2007 | 2008 | 2009 |
|-----------------------------------|------|------|------|
| Number of centres performing arts |      |      |      |
| Singing/Dancing                   | 1    | 1    | 1    |
| Mask Dances                       | 1    | 1    | 1    |

Note: "0" means not there

Source:GIS Infrastructure Mapping 2008/ Cultural Sector, Trashiyangtse Dzongkhag

TABLE 19.1: ENVIRONMENT, TRASHIYANGTSE, 2005

| Details                                  | 2005  |
|--|-------|
| Forest coverage (%)                      | 76    |
| Households using fuel wood (%)           | 0.98  |
| Households using electricity (%)         | 44.89 |
| Number of Protected spring water sources | 1     |
| Number of Lakes                          | 0     |

Note: Fuel wood & electric use for cooking

Source: GNHC 10 FYP, SEDI 2005 & Forest Sector, Trashiyangtse Dzongkhag

TABLE 20.1: POVERTY, DEPENDENCY RATIO AND HOUSING CONDITION,  
TRASHIYANGTSE, 2007

| Details                                     | 2007 |
|---|------|
| Population below total poverty line (%)     | 0.3  |
| Households below total poverty line (%)     | 0.3  |
| Population below food poverty line (%)      | 0.5  |
| Households below food poverty line (%)      | 0.4  |
| Households availing rural credit (%)        | na   |
| Average annual household expenditure (Nu.)  | na   |
| Landless households (%)                     | 1.98 |
| Dependency                                  |      |
| Child dependency ratio                      | 62.3 |
| Old age dependency ratio                    | na   |
| Overall dependency ratio                    | 71.6 |
| Housing condition                           |      |
| Household with straw/leaves roof (%)        | 830  |
| Household with bamboo roof (%)              | 844  |
| Household with metal roof (%)               | 2030 |
| Household with concrete/tiles roof (%)      | 36   |
| Household with shingles roof (%)            | 0    |
| Number of persons per room                  |      |
| Number of households living in own dwelling | 2890 |
| Number of households living in rented house | 600  |
| Ownership of assets (Number)                |      |
| Households with land/plot                   | 3345 |
| Households owning livestock                 | 2183 |
| Households owning vehicle                   | 118  |
| Households owning refrigerator              | 139  |
| Households owning washing machine           | 15   |
| Households owning rice cooker               | 3250 |

Source: PAR 2007/PHCB 2005 & BLSS 2007